



Truck Plugs

Liquip offers truck plugs with added ground assurance to suit 2 wire and 5 wire overfill systems with 3 or 4 pin bayonet fastening (J-slots).

The industry standard 10 pin overfill protection is interchangeable with others of the same type and incorporates no-cost wiring connectors which ensure the tanker is bonded to the gantry so long as the plug body is correctly mounted. This dissipates static electricity and prevents sparks due to differences in potential.

The design of truck plugs is unique in that it ensures grounding of the tanker to the gantry by using the mounting bolts inside the truck plug.

Features & Benefits

- 3 and 4 bayonet style J-slots fixing to industry standard.
- 10 pin as standard.
- Allows for overfill protection with added ground assurance.
- Sufficient room to easily install and mount dummy probe as required in 2 wire systems.
- Hard-coated nose ring and J-slots for longer service life.
- Offers compatibility with virtually all terminals built to EN13922 or API RP 1004.

Technical Information

Materials

- Aluminium nose-cone, hard anodised.
- Stainless steel pins and terminator.
- Acetal mounting block.
- Aluminium body and cover plate.
- PVC cap. Order separately, see below.

Mounting

- Mounting by 2 stainless steel bolts 8mm dia. via acetal insulating bushes.
- 3 and 4 bayonet fixing to industry standard.
- Conduit ports 1/2" NPT (straight) thread, two options. 10 pin as standard.

Weight

1.3kg.

Associated Equipment

- **5069:** Truck Plug Socket Dust Cap - Blue.
- **DP300 Series:** Overfill Dummy Probes.
- **LDP200 Series:** Overfill Probes.
- **GP100 Series:** Overfill Gantry Plugs.

Ordering Information

- **TP103:** Truck Plug with 3 pin bayonet fastening.
- **TP104:** Truck Plug with 4 pin bayonet fastening (use also for 2 pin).



Truck Plug Dust Cap

Liquip offers durable plastic/wired dust caps for use with truck mounted overfill sockets/truck plugs.

Features & Benefits

- Heavy duty wire connecting main body of the cap to the mounting eye.
- Thicker spacer supplied for mounting, to allow the cap to rotate freely, reducing wear.
- Blue colour coded cap to represent intrinsically safe equipment.
- Prevents environmental damage to truck plug socket.
- Will fit all overfill sockets built to EN13922 & API RP 1004.

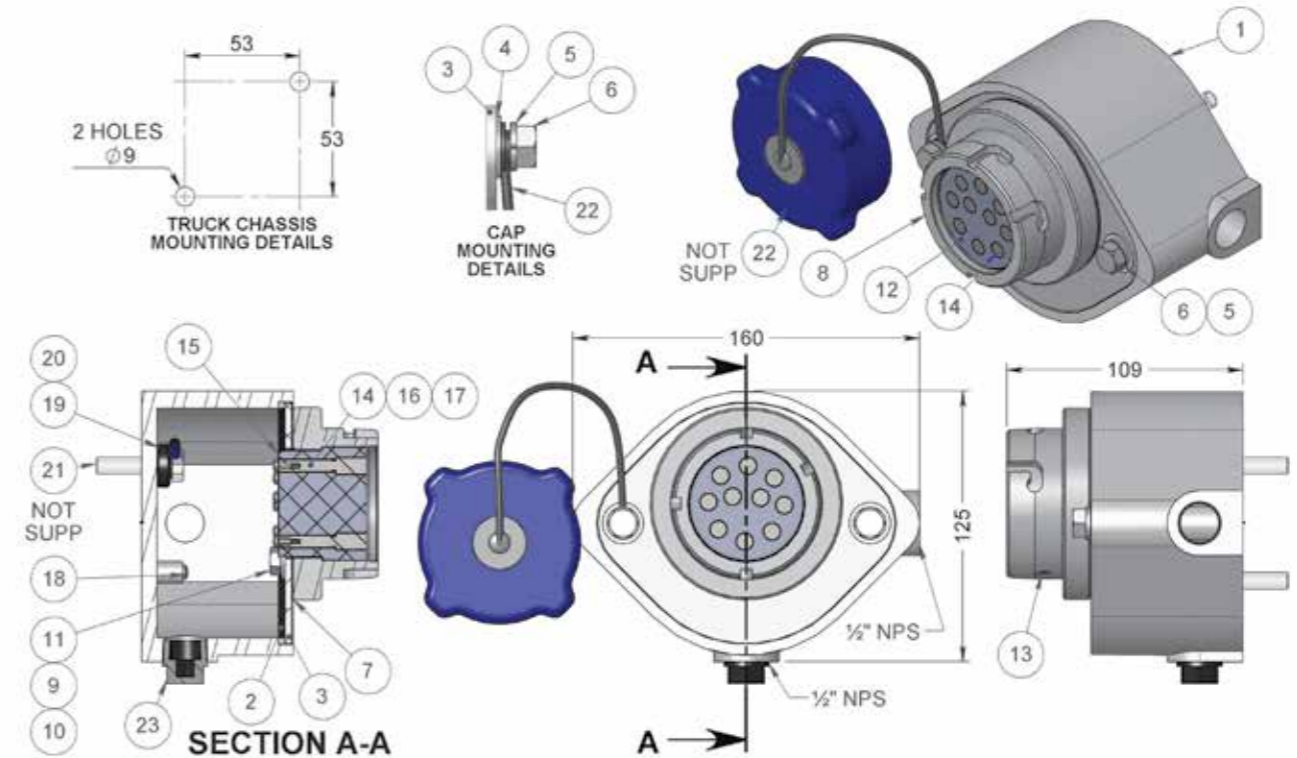
Ordering Information

- **5069:** Truck Plug Socket Dust Cap - Blue.

Associated Equipment

- **TP100 Series:** Truck Plugs.

TP103 & TP104 TRUCK PLUGS



ITEM	PART No	DESCRIPTION	TP104	TP103	TP104-8	MATERIAL
1	TP101-1	BODY	1	1	-	ALUMINIUM
2	4258	SEAL GASKET FOR TP	1	1	1	NITRILE
3	TP100-2	COVER PLATE	1	1	1	ALUMINIUM
4	0101	WASHER FLAT	2	2	2	Z/P STEEL
5	0108	WASHER SPRING	2	2	2	Z/P STEEL
6	0011	SETSCREW HEX	2	2	2	Z/P STEEL
7	4259	GASKET	1	1	1	BLACK FIBRE
8	TP104-3	PLUG 4-PIN	1	-	1	ALUMINIUM
	TP103-3	PLUG 3-PIN	-	1	-	ALUMINIUM
9	0100	WASHER FLAT	2	2	2	Z/P STEEL
10	0114	WASHER SHK-PRF	2	2	2	Z/P STEEL
11	4843	SETSCREW HEX	2	2	2	Z/P STEEL
12	TP100-5	SOCKET - STANDARD	1	1	1	ACETAL
13	4845	SCREW C/SUNK MET	1	1	1	ST STEEL
14	TP100-4	PIN CONTACT	10	10	10	ST STEEL
15	4728	IDENTIFICATION LABEL	1	1	1	POLYCARB
16	5238	WASHER SHK-PRF INT	10	10	10	ST STEEL
17	4844	SCREW METRIC	10	10	10	ST STEEL
18	3234	SELF TAPPING SCREW PAN/PH	2	2	2	ST STEEL
19	TP101-6	BUSH	2	2	-	ACETAL
20	4882	EYE TERMINAL	2	2	-	Z/P STEEL
21		HEX HEAD BOLT MAX Ø8 TO REQ'D LENGTH	NOT SUPPLIED	NOT SUPPLIED	-	ST STEEL
22	5089	CAP	NOT SUPPLIED	-	-	PVC
23	5637	PLUG	1	1	-	PVC
24	4729	INSTRUCTION LEAFLET	1	1	-	PAPER
25	4666	WARNING LABEL	1	1	-	PAPER