



## 18" Bolt Style Manhole Covers

### VOH750 SERIES

Liquip offers a unique 455mm (18") diameter Manhole Cover to suit the specification of oil companies and transport fleets.

VOH750 Series Manhole Covers are available in cast aluminium and comes with three equipment mounting positions for overfill protection, vapour recovery and Dip & Fill accessories.

Australian drop test approval makes these manholes ideal for both top and bottom loading.

#### Features & Benefits

- Australian drop test approved.
- Cast aluminium lightweight & durable construction.
- Two stage opening mechanism enables internal pressure to be released before completely opening the manhole cover.
- 225mm (9") emergency pressure vent included to enable bulk pressure release in event of a fire or rollover.
- Emergency vent doubles as an easy to open inspection hatch for top loading or visual inspection.
- Can be fitted with a 1" thermal pressure & vacuum vent complying with recognised industry codes (for thermal expansion purposes).
- Any mounting positions not utilised can be securely blanked off until required.
- Available with either a plain or lockable handle.
- Secure Locking Feature via Gravity Latch or Lockable Bridge & Handle.

#### Technical Information

##### Regulations

Passes the Australian drop tests.

##### Mounting

The VOH750 series is attached to the manhole coaming using a 24 bolt pattern.

#### Ordering Information

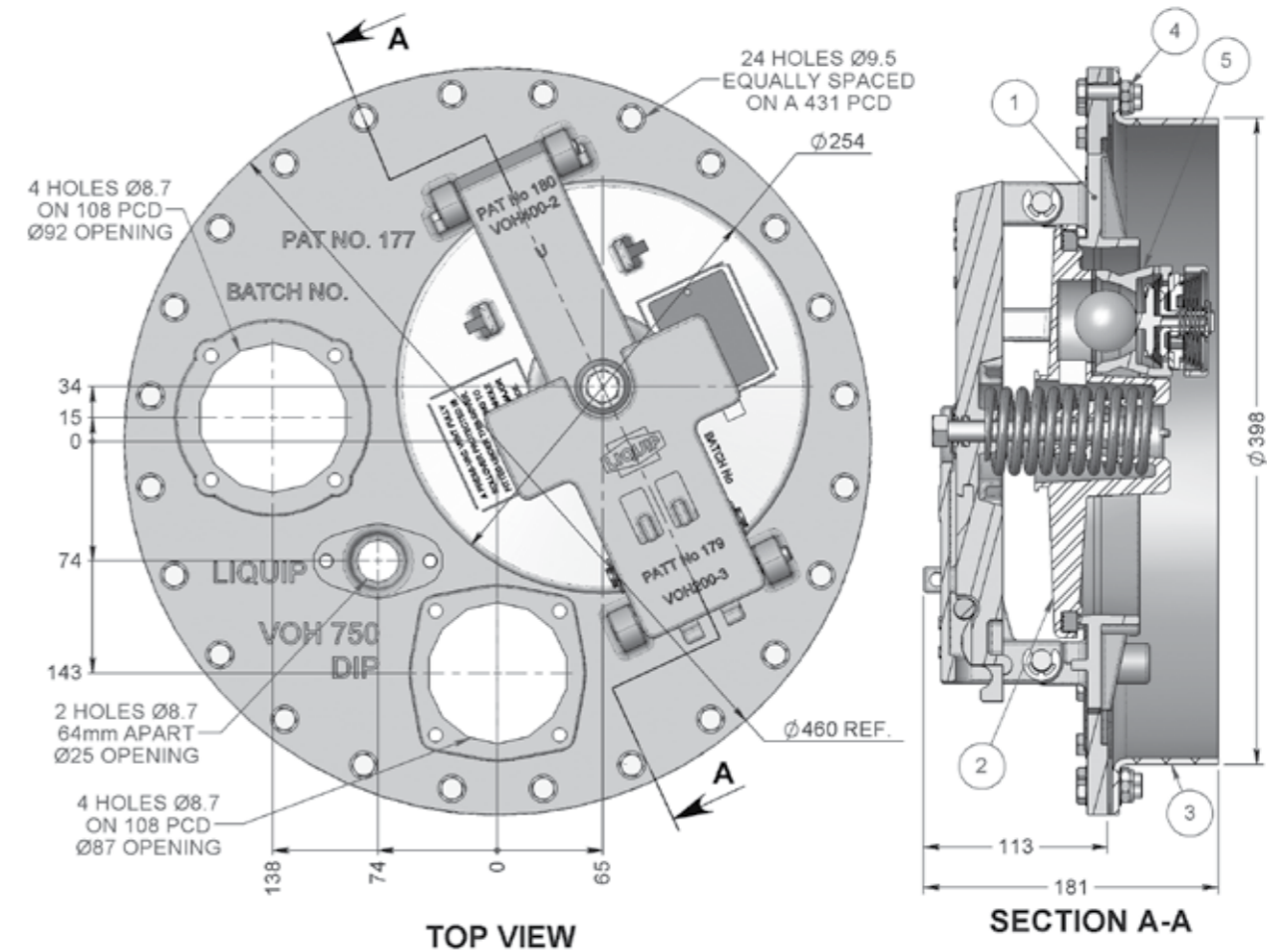
- **VOH7502A4A0:** VOH750 Manhole 24 Bolt, Alum bridge (30kPa) plain handle, PVV104, no Gravity latch.
- **VOH7502A400:** VOH750 Manhole 24 Bolt, Alum bridge (30kPa) plain handle, PVV blank plate, no Gravity latch.
- **VOH7502B4U0:** VOH750 Manhole 24 Bolt, Alum bridge (24kPa) plain handle, PVV104U, no Gravity latch.
- **VOH7502B4U1:** VOH750 Manhole 24 Bolt, Alum bridge (24kPa) plain handle, PVV104U, with Gravity latch.
- **VOH7502U4U0:** VOH750 Manhole 24 Bolt, Alum bridge (30kPa) plain handle, PVV104U, no Gravity latch.
- **VOH7502U4U1:** VOH750 Manhole 24 Bolt, Alum bridge (30kPa) plain handle, PVV104U, with Gravity latch.
- **VOH7503A4A0:** VOH750 Manhole 24 Bolt, Alum bridge (30kPa) lockable handle, PVV104, no Gravity latch.
- **VOH7503B4U0:** VOH750 Manhole 24 Bolt, Alum bridge (24kPa) lockable handle, PVV104U, no Gravity latch.
- **VOH7503B4U1:** VOH750 Manhole 24 Bolt, Alum bridge (24kPa) lockable handle, PVV104U, with Gravity latch.
- **VOH7503U4U0:** VOH750 Manhole 24 Bolt, Alum bridge (30kPa) lockable handle, PVV104U, no Gravity latch.
- **VOH7503U4U1:** VOH750 Manhole 24 Bolt, Alum bridge (30kPa) lockable handle, PVV104U, with Gravity latch.

**Note:** Refer for VOH Series ordering guide for all models available.

#### Associated Equipment

- **VOH700-26:** Aluminium Coaming.
- **VOH700-26M:** Mild Steel Coaming.
- **AVV3.0-10:** Vapour Recovery Blank Plate.
- **VOH700TH-13:** Dip & Fill Blank Plate.
- **VOH700TH-14:** Overfill Blank Plate.
- **VOH700-22:** Sight Glass.
- **UG101:** Ullage Gauge.

## VOH750 MANHOLE ASSEMBLY



ITEM 2: MODEL SHOWN WITH PLAIN HANDLE, 30kPa SPRING & LABEL FOR PVV104 (SUB-ASSEMBLY VOH500-32A)  
 VARIANTS: PLAIN HANDLE, 24kPa (3 PSI) SPRING & LABEL FOR PVV104U (SUB-ASSEMBLY VOH500-32B)  
 PLAIN HANDLE, 30kPa SPRING & LABEL FOR PVV104U (SUB-ASSEMBLY VOH500-32U)  
 LOCKABLE HANDLE, 30kPa SPRING & LABEL FOR PVV104 (SUB-ASSEMBLY VOH500-33A)  
 LOCKABLE HANDLE, 24kPa (3 PSI) SPRING & LABEL FOR PVV104U (SUB-ASSEMBLY VOH500-33B)  
 LOCKABLE HANDLE, 30kPa SPRING & LABEL FOR PVV104U (SUB-ASSEMBLY VOH500-33U)

ITEM 3: PRESSURE VACUUM VENT REQUIRED IS DETERMINED BY CONFIGURATION OF ITEM 2.

ITEM 4: MODEL SHOWN WITH ROLLED ALUMINIUM COAMING VOH700-26  
 VARIANT: MILD STEEL COAMING VOH700-26M  
 \*COAMING SUPPLIED SEPARATELY\*

ITEM 5: GASKET & FASTENER SUB-ASSEMBLY IS SUPPLIED SEPARATELY.

NOT SHOWN: GRAVITY LATCH SUB-ASSEMBLY (ADD IF REQUIRED - VOH500-34Z)

ITEM NO.	PART NUMBER	DESCRIPTION	VOH750	MATERIAL
1	VOH750-1	COVER MANHOLE	1	ALUMINIUM
2	VOH500-32A	EMERGENCY VENT PLAIN BRIDGE & HANDLE	1	ALUMINIUM
3	VOH700-26	COAMING ALUMINIUM 24 BOLT	1	ALUMINIUM
4	VOH700-36Z	GASKET & FASTENER KIT	1	NBR CORK
5	PVV104	PRESSURE AND VACUUM VENT	1	ALUMINIUM