



API Sightglasses

Liquip offers a range of 3" and 4" TTMA sightglass flanges which allow for visual identification of product in the run down piping prior to opening the API valve.

The standard drilling is TTMA, so the unit will fit behind an API adaptor as well as a Liquip butterfly valve.

Technical Information

Pressure

Max pressure 1000 kPa.

Temperature

Max temp 70°C.

Ordering Information

- **BF3-SG:** 3" TTMA x 25mm thick.
- **BF4-SG-25 :** 4" TTMA x 25mm thick.
- **BF4-SG-40:** 4" TTMA x 40mm thick.
- **BF4-SG-25Z:** BF4-SG-25 c/w 1 x 4" TTMA NBR Cork Gasket.
- **BF4-SG-25VZ:** BF4-SG-25 c/w 1 x 4" TTMA Viton™ Gasket.
- **BF4-SG-40Z:** BF4-SG-40 c/w 1 x 4" TTMA NBR Cork Gasket.
- **BF4-SG-40VZ:** BF4-SG-40 c/w 1 x 4" TTMA Viton™ Gasket.
- **API-SG-150:** Sightglass ASA150 40mm 125ID.

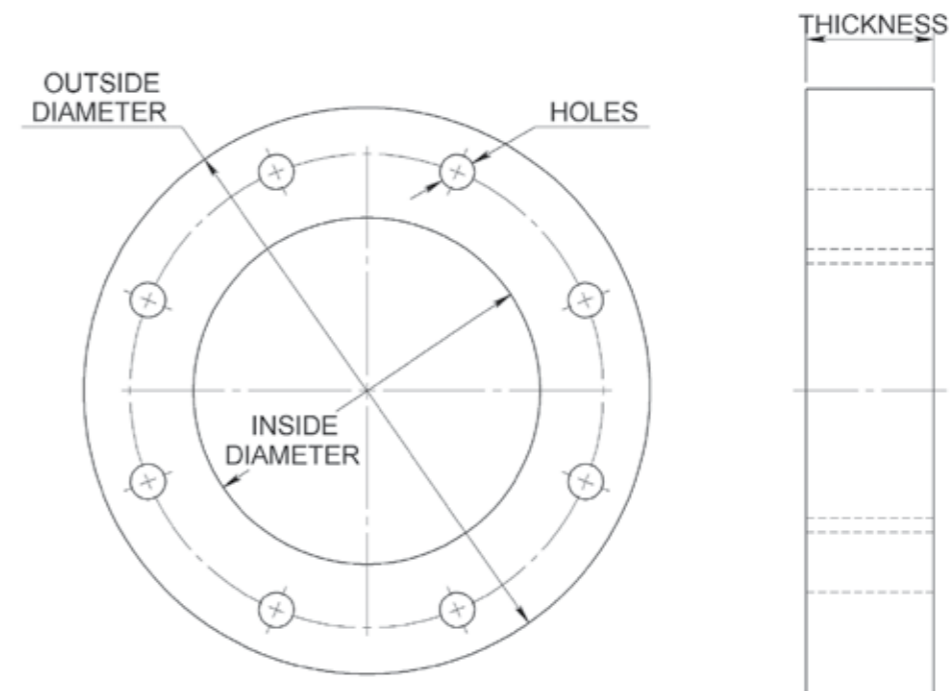
Mounting

4" TTMA.

Materials

Acrylic.

SIGHTGLASS FOR FLANGES



Size	Part No	Outside Diameter	Inside Diameter	Thickness	Holes
4" ANSI125	API-SG-150	228	130	40	8 x Ø19 on 190 PCD
4" TTMA	BF4-SG-25	178	109	25	8 x Ø11 on 149.2 PCD
4" TTMA	BF4-SG-40	178	109	40	8 x Ø11 on 149.2 PCD
3" TTMA	BF3-SG	146	86	25	8 x Ø11 on 124 PCD

NOTES:

1. MATERIAL IS CAST ACRYLIC.
2. MOUNTING FLANGES TO BE FLAT TO WITHIN 1mm.
3. VITON (OR SIMILAR HARDNESS) GASKETS TO BE USED.
4. TIGHTEN MOUNTING BOLTS TO A TORQUE OF 20Nm.